

# SilverSense SDF™

38% Silver Diamine Fluoride

ORAL CARE

## MORE TREATMENT OPTIONS. MORE PATIENT CHOICES. HEALTHIER TEETH!

### SILVER DIAMINE FLUORIDE IS PROVEN TO ELIMINATE YOUR PATIENTS' ORAL PAIN

SilverSense SDF immediately eliminates hypersensitivity<sup>1,2</sup>; enables more comfortable, pain-free dentistry; no needles, no drills. It helps prepare the tooth for your esthetic restorations.

SilverSense SDF also enables you to deliver assured care to your patients, even when they delay recommended treatment.

#### The result: healthier teeth, healthier patients.

**ELIMINATES SENSITIVITY.** SilverSense SDF silver particles act as a powerful desensitizer by occluding dentinal tubules, producing preferential fluorohydroxyapatite and increasing mineral density and hardness.<sup>3</sup>

**STOPS HARMFUL BACTERIAL FORMATION.** Fluoride inhibits biofilm formation. Silver helps destroy plaque biofilm.<sup>4</sup>

**ELIMINATES PATIENT FEARS.** SilverSense SDF paints on with a Benda® Micro applicator. There is no need for injections, anesthesia or drilling.

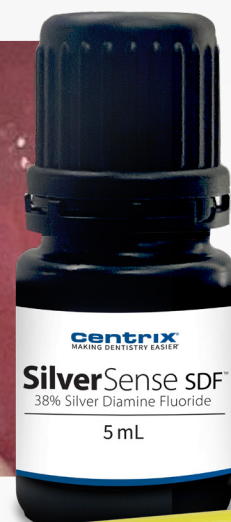
**FAST & EASY TO USE.** Application is simple and **takes only minutes**; perfect for even the most wiggly or impatient of patients.

**HARDENS AND CONDITIONS SOFTENED DENTIN.** SilverSense SDF fosters remineralization, inhibits calcium dissolution from hydroxyapatite and prevents the demineralization of enamel and dentin.<sup>5</sup> Treated dentin will be twice as hard as healthy dentin.<sup>6</sup>

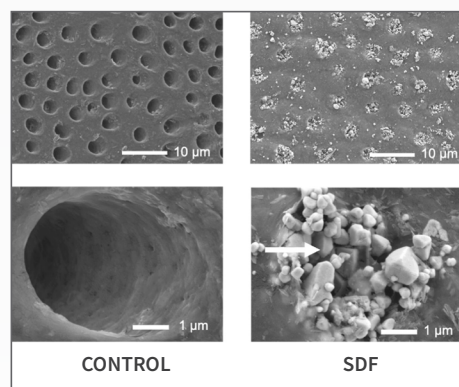
**COST-EFFECTIVE.** One drop treats up to 5 teeth, **less than \$0.80/patient**. If a patient is delaying restorative treatment due to financial concerns, SilverSense SDF will provide effective relief in the interim.

#### DOES NOT TURN TEETH BLACK!

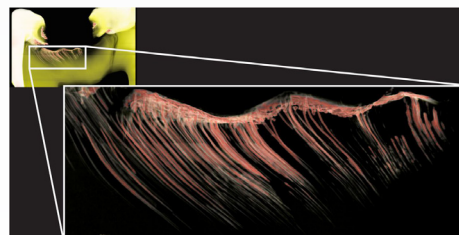
SilverSense SDF will not stain healthy enamel or dentin. It only darkens the lesion on which it is placed.



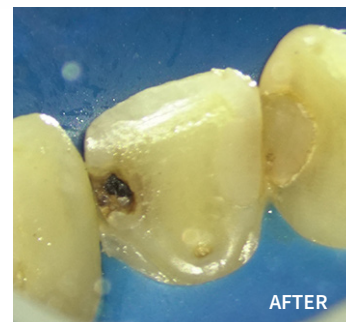
RESTORED TOOTH AFTER SILVERSENSE SDF



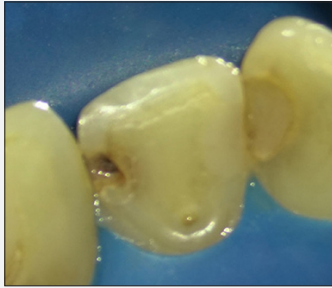
SEM IMAGES AT LOW/HIGH MAGNIFICATION. ARROW SHOWS OCCLUDING DENTINAL TUBULES 2 WEEKS AFTER SDF APPLICATION.<sup>8</sup>



SILVER MICROWIRES COURSING THROUGH DENTINAL TUBULES FOLLOWING CLINICAL TREATMENT OF CARIES LESIONS WITH SDF.<sup>7</sup>



**FAST & EASY TO USE!**



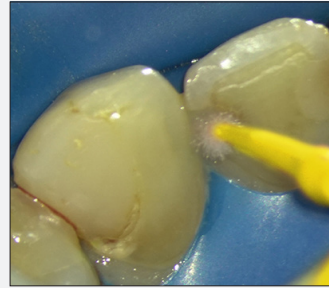
**STEP 1:**

- Ensure the tooth is clean and dry.
- Isolate the tooth (rubber dam or cotton roll).
  - Remove excess plaque.
  - Dry the affected area with a cotton pellet.



**STEP 2:**

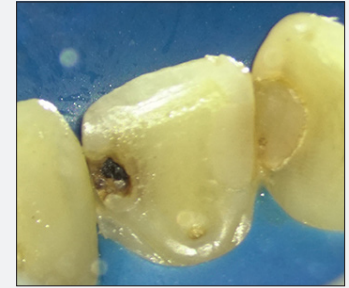
Place 1–2 drops of **SilverSense SDF** into a disposable dappen dish. Tinted blue for increased visibility.



**STEP 3:**

Apply **SilverSense SDF** directly to the affected tooth surface with a Benda® Micro applicator. Reapply until the lesion stays wet.

For approximal surfaces, apply to embrasures. **SilverSense SDF** will wick into the lesion.



**STEP 4:**

Allow to air dry for 60 seconds. **Do not rinse.**

Remove excess **SilverSense SDF** with a cotton pellet.

**TWO EASY WAYS TO MANAGE DISCOLORATION!**

**1. Tempit® Temporary Filling Material**

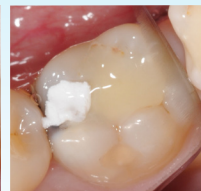
Tempit will mask any discoloration until you are ready to restore!

**2. GI, RMGI or Composite**

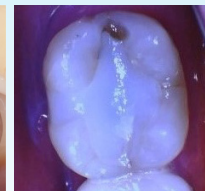
Studies show that SDF does not negatively affect bond strength<sup>11,12</sup> so you can restore form and function with the material of your choice; we have guidelines to help.



APPLY TEMPIT



AFTER APPLICATION



SDF TREATED TOOTH



AFTER RESTORATION

For more clinical case photos and information about SDF visit: [centrixdental.com/sdf-clinical/](http://centrixdental.com/sdf-clinical/)

**Ordering is Easy! Call 800.235.5862 or Contact Your Preferred Dealer.**

**ORDERING INFORMATION**

**REF 310172** SilverSense SDF Standard Kit, 1 x 5 mL bottle, 20 applicators

**REF 310173** SilverSense SDF Clinic Kit, 3 x 5 mL bottle, 50 applicators

**REF 380012** Benda Micro Applicators, Fine Yellow, 576-ct.

**REF 360107** FluoroDose® Melon, 120-ct.

**REF 360110** FluoroDose® Cherry, 120-ct.

**REF 360086** FluoroDose® Mint, 120-ct.

**REF 360087** FluoroDose® Bubble Gum, 120-ct.

**REF 360137** FluoroDose® Caramel, 120-ct.

**DESENSITIZING INGREDIENT:** Silver Diamine Fluoride, 38.3% to 43.2% w/v. **OTHER INGREDIENTS:** Purified water, food-grade blue colorant.

**CONTRAINDICATIONS:** Patients with ulcerative gingivitis or stomatitis or known sensitivity to silver or other heavy-metal ions. Patients with six or more affected sites, or patients having had full mouth gingivectomies. Patients showing abnormal skin sensitization in daily circumstances.

**SDF + FLUORIDE VARNISH = MAXIMUM BENEFIT**



The ADA recommends fluoride varnish for high-risk patients. The patients you treat with SilverSense SDF are high-risk and should receive fluoride varnish treatment on all teeth.<sup>9,10</sup>

1: Castillo JL, Rivera S, Aparicio T, Lazo R, Aw TC, Mand LL, Milgrom P. The short-term effects of diamine silver fluoride on tooth sensitivity: a randomized controlled trial. *J Dent Res.* 2011 Feb;90(2):203-8. doi: 10.1177/0022034510388516. Epub 2010 Nov 30. PMID: 21118796; PMCID: PMC6706813.

2: Alice Kit Ying Chan, Yiu Cheung Tsang, Chloe Meng Jiang, Katherine Chiu Man Leung, Edward Chin Man Lo, Chun Hung Chu. Treating hypersensitivity in older adults with silver diamine fluoride: A randomised clinical trial. *Journal of Dentistry.* Volume 136, 2023, 104616, ISSN 0300-5712

3: Public Health Intervention: Use of Silver Diamine Fluoride for Arresting Dental Caries, Illinois Department of Public Health, 25 Aug. 2020. [dph.illinois.gov/content/dam/soi/en/web/idph/files/publications/illinois-department-public-health-sdf-8252020-update.pdf](http://dph.illinois.gov/content/dam/soi/en/web/idph/files/publications/illinois-department-public-health-sdf-8252020-update.pdf).

4,5: Zheng FM, Yan IG, Duangthip D, Gao SS, Lo ECM, Chu CH. Silver diamine fluoride therapy for dental care. *Jpn Dent Sci Rev.* 2022 Nov;58:249-257. doi: 10.1016/j.jdsr.2022.08.001. Epub 2022 Sep 7. PMID: 36097560; PMCID: PMC9463534.

6,7: Horst J, Seto J. Silver fluoride as a treatment for the disease dental caries. *bioRxiv.* 2017 Jun; 152207; doi: <https://doi.org/10.1101/152207>

8: Srisomboon S, Ketratad M, Stray A, Pakawanit P, Rojviriyaj C, Patitrapong S, Pampisut P. Effects of Silver Diamine Nitrate and Silver Diamine Fluoride on Dentin Remineralization and Cytotoxicity to Dental Pulp Cells: An In Vitro Study. *Journal of Functional Biomaterials.* 2022; 13(1):1-16. <https://doi.org/10.3390/jfb13010016>

9: Anselmo T, Frantsve-Hawley J, Meyer D, Tracy S, Weyant R. Topical fluoride for caries prevention. *JADA.* 2013 Nov; doi: <https://doi.org/10.14219/jada.archive.2013.0057>

10: American Academy of Pediatric Dentistry. (2017). Chairside guide: Silver diamine fluoride in the management of dental caries lesions. *Pediatr Dent.* 39(6), 478-9.

SilverSense SDF is FDA-cleared for treating dentinal sensitivity. For use in patients 21 and older. FluoroDose®, Benda® Micro and Tempit® are registered trademarks of Centrix, Inc.

11: Danaeifar N, Nejat AH, Cehreli Z, Ballard RW, Johnson JT. The Effect of Silver Diamine Fluoride on Bond Strength of Three Types of Bulk-Fill Restorative Materials to Dentin. *Pediatr Dent.* 2022 Jul 15;44(4):290-295. PMID: 3599684.

12: Wang AS, Botelho MG, Tsai JKH, Matinlinna JP. Effects of silver diamine fluoride on microtensile bond strength of GIC to dentine. *Int J Adhes Adhes.* 2016;70:196–203. doi: 10.1016/j.jadhadh.2016.06.011. [CrossRef] [Google Scholar]