

Exposé®

Disposable Caries Indicator

CARIES DETECTION MADE EASIER

EXPOSÉ IS A CARIES INDICATOR ON A STICK!

Our indicator solution is pre-dried right onto our Benda® Micro applicator. When applied to the tooth, Exposé stains the infected dentin. Simply touch Exposé on a wet tooth (or wet with a 3-way syringe) and apply it to the suspected lesion and rinse. If the lesion is stained, it is carious. Exposé will not stain healthy dentin or enamel.

WITH EXPOSÉ YOU CAN BE SURE

- Ideal for verifying 'sticks' (cavitated or non-cavitated)
- Selective caries removal
- Ensure all carious material is removed from a prep or wall of a canal during a core build-up
- Exposé helps ensure that healthy dentin completely surrounds any remaining carious material

FEATURES

- Pre-dried indicator solution so there is no inadvertent staining
- Two head sizes to make access easy – any tooth, any location, any patient
- Bendable head stays where you want it for even easier access
- Safe, patient-friendly FD&C dye in a propylene glycol base
- A cost so low that Exposé should be on every patient tray, every time

EXPOSÉ IN USE



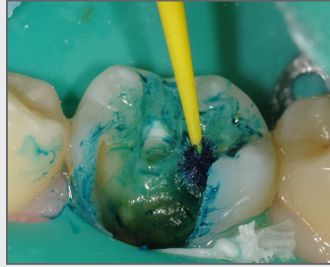
Fine

Extra-Fine

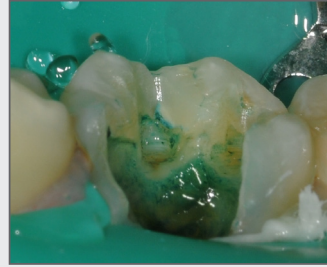
INSTRUCTIONS FOR USE



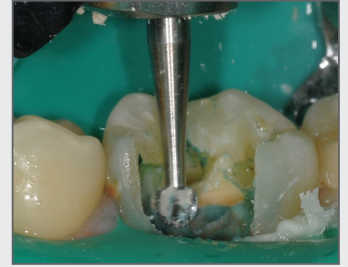
1. Lightly wet the Exposé applicator with water or the wet tooth.



2. Apply the wet Exposé applicator to the prepared tooth.



3. Rinse and examine the area for any Exposé that remains on the affected dentin.



4. Remove Exposé until tooth is clear. Continue with procedure.

BLUE INDICATORS



Fine (1.5 mm point)



Extra-Fine (1.0 mm point)

- Easier to see decay on dentin
- Differentiate between decay and pulp in deep preps
- Clearly see decay on preps where dentin decay is tooth-colored

ORDERING INFORMATION

Exposé Caries Indicator – Blue

REF 310330 Blue, Fine, Yellow Handle, 576-ct

REF 310334 Blue, Fine, Yellow Handle, 100-ct

REF 310331 Blue, Extra-Fine, Ivory Handle, 576-ct

REF 310335 Blue, Extra-Fine, Ivory Handle, 100-ct

Ordering is easy. Call **800.235.5862** or contact your preferred dealer.
Visit **centrixdental.com** for more information.