

Access Crown[®]

Temporary Crown & Bridge Material

MORE:

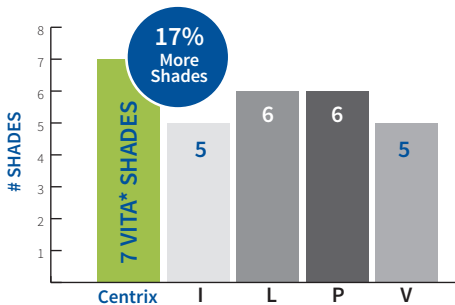
- ✓ Shades
- ✓ Speed
- ✓ Strength
- ✓ Savings



ACCESS CROWN GIVES MORE QUALITY FOR LESS!

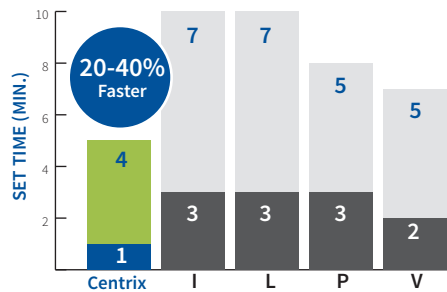
Access Crown is the easiest and fastest bis-acryl temporary resin material. Its unique elastic polymerization characteristics (“memory”) enable it to be pulled from undercuts or non-parallel preps and to return to its original form. Its high flexural strength provides superior performance during function.

✓ MORE SHADES



✓ MORE SPEED

Intraoral Set & Final Cure Time



✓ MORE ACCOLADES 91% CLINICAL RATING

“Consistently good results.”

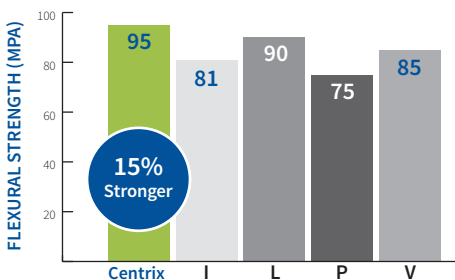
“Works just as well as my favorite brand.”

“Sets hard.”

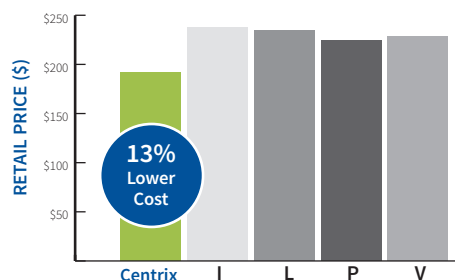
“Polishes well and holds its color.”

— THE DENTAL ADVISOR EVALUATORS

✓ MORE STRENGTH



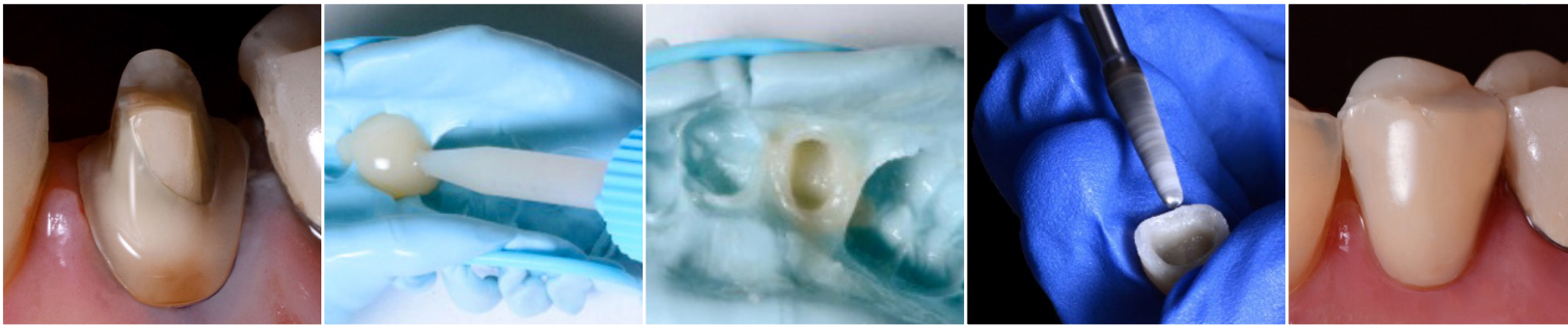
✓ MORE SAVINGS



4.5 out of 5 rating



EASY TEMPORIZATION



Any Case
Any Size
C&B or Veneer

Easy Expression
Less Waste
More Savings

40% Faster Set
Easy Removal
Even with Undercuts

Easy to Trim
More Strength
Ready for Cementation

Natural Esthetics
High Fluorescence
Superior Function

Photos by Dr. Miguel A. Ortiz, DMD

- Ideal handling characteristics: reaches elastic state and ready to remove from mouth in less than 60 seconds
- Low shrinkage, low heat generation
- High compressive flexural strength
- MMA-free: no unpleasant taste or smell
- Easily repaired with flowable composite
- Enhanced color stability for less staining
- Radiopaque for diagnostics
- High polishability
- Fits 1:1 automix cartridge system
- More homogenous mix for stronger provisionals
- Reduced waste yields more units per cartridge

ORDERING INFORMATION

7 Shades to Temporize Any Smile

Each kit contains one 1:1 (76g) cartridge and 10 SuperMixer™ Mixing Nozzles.

- | | |
|--------------------------|---------------------------------|
| 360035 Shade A1 | 360031 Shade B1 |
| 360034 Shade A2 | 360038 Shade BL (Bleach) |
| 360030 Shade A3 | 360037 Shade C2 |
| 360029 Shade A3.5 | |

Suggested Accessories

- 910626** SuperMixer™ Mixing Nozzles, Blue Hub, 50
- 360036** DS50 1:1 Automix Gun
- 310521** Access® Temp Cement
- 310157** NoMIX® Temp Cement Patient Take-home Applicators
- 310520** NoMIX® Temp Cement Starter Kit
- 330531** VersaFlo® Single Syringe A2
- 310280** NoCord™ VPS Intro Trial kit

Ordering is easy! Call **800.235.5862** or contact your preferred dealer.

Visit centrixdental.com for more information.

SuperMixer™ MIXING NOZZLES THAT GIVE YOU MORE!

