

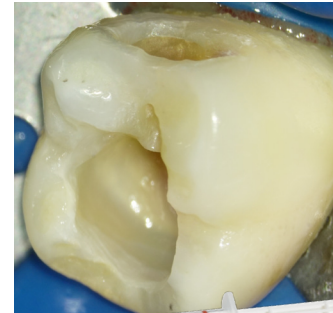
# ELIMINATE SENSITIVITY WITH 3 PROVEN SOLUTIONS!

Dentinal hypersensitivity affects approximately 1 in 8 adults<sup>1</sup>, making it one of the most common—and frustrating—clinical challenges in everyday dentistry. Whether the patient complains of sensitivity post-op, post-bleaching or even due to caries, managing hypersensitive teeth requires more than a one-size-fits-all approach.

## PREVENT THE DEVELOPMENT OF SENSITIVITY BEFORE IT CAN BEGIN

### GLU/SENSE DENTIN PRE-TREATMENT DESENSITIZER GEL

- Reduces risk of post-op sensitivity at the source
- Occludes dentinal tubules and stabilizes the collagen matrix
- Promotes adhesion<sup>2</sup> and simultaneously provides an antibacterial effect<sup>3</sup>
- Clear formula—ideal for esthetic restorations



## ELIMINATE POST-OP SENSITIVITY

### D/SENSE CRYSTAL DUAL-ACTION CRYSTAL PRECIPITATE DESENSITIZER GEL

- Works in as little as 30 seconds to treat post-op tooth sensitivity and naturally occurring sensitivity (not caused by caries)
- Occludes the tubules and seals the dentin surface with an acid-resistant complex
- Maintains natural tooth appearance – ideal when aesthetics are important
- Can be used at the gum line and on exposed root surfaces



## ELIMINATE SENSITIVITY CAUSED BY CARIES

### SILVERSENSE SDF 38% SILVER DIAMINE FLUORIDE

- Provides powerful, site-specific relief for caries-related sensitivity
- Penetrates deep into dentin (~50–200  $\mu\text{m}$ ) to block nerve impulses<sup>4</sup>
- Can be restored over for long-term treatment planning and better esthetics
- More effective desensitizer than potassium nitrate or glutaraldehyde<sup>5</sup>



SilverSense SDF is cleared by the FDA for the treatment of dental hypersensitivity and reduction of post-operative sensitivity.

# DESENSITIZER SOLUTIONS TAILORED TO YOUR CLINICAL NEEDS

	GLU/SENSE	D/SENSE CRYSTAL	SILVERSENSE SDF
<b>PRIMARY USE</b>	Prevents the development of post-op sensitivity	Treats existing non-carries related sensitivity	Treats caries-related sensitivity
<b>KEY MECHANISM</b>	Occludes tubules with HEMA/ glutaraldehyde	Forms calcium oxalate and potassium nitrate crystals to seal tubules	Forms precipitates with calcium and phosphate to block nerve impulses
<b>APPLY ON CARIES</b>	No	No	Yes
<b>APPLICABLE CLINICAL SITUATIONS</b>	Under direct or indirect restorations	Bleaching, exposed roots, acidic wear	Active caries and secondary caries
<b>SOFT TISSUE EFFECT</b>	Avoid soft tissue contact	Can be used at the gum line and/or exposed root surfaces	Possible temporary irritation/ discoloration. Disappears in 24-48 hrs.
<b>DELIVERY</b>	Syringe + Brush Tip	Syringe + Brush Tip	Dropper bottle + Benda® Micro applicator



**LEARN MORE ABOUT OUR DENSITIZER SOLUTIONS!**

## ORDERING INFORMATION

<b>REF 310122</b>	<b>Glu/Sense</b>	6 x 1.0 mL syringe + 60 Brush Tips
<b>REF 310106</b>	<b>D/Sense Crystal</b>	6 x 1.0 mL syringe + 24 Brush Tips
<b>REF 310172</b>	<b>SilverSense SDF Standard Kit</b>	1 x 5 mL bottle, 20 Benda Micro applicators
<b>REF 310173</b>	<b>SilverSense SDF Clinic Kit</b>	3 x 5 mL bottle, 50 Benda Micro applicators

Ordering is easy! **Call 800.235.5862** or contact your preferred dealer.  
**Visit [centrixdental.com](https://centrixdental.com) for more information.**

1. The prevalence of dentin hypersensitivity in general dental practices in the northwest United States. Cunha-Cruz, Joana et al. The Journal of the American Dental Association, Volume 144, Issue 3, 288 - 296.
2. Mancuso, E., et al. (2023). Glutaraldehyde-based desensitizers' influence on bonding performance: An in vitro study. Journal of Dentistry, 136, Article 104643. <https://doi.org/10.1016/j.jdent.2023.104643>
3. Hanzén, T. A., de Paula, A. M., Grokoski, E., Macêdo de Oliveira, I., Arana-Gordillo, L. A., Queiroz de Melo Monteiro, G., Perdigão, J., & Loguercio, A. D. (2023). Glutaraldehyde-based desensitizer does not influence postoperative sensitivity and clinical performance of posterior restorations: A 24-month randomized clinical trial. Dental Materials, 39(10), 946–956. <https://doi.org/10.1016/j.dental.2023.08.179>
4. Horst JA, Ellenikiotis H, Milgrom PL. UCSF Protocol for Caries Arrest Using Silver Diamine Fluoride: Rationale, Indications and Consent. J Calif Dent Assoc. 2016 Jan;44(1):16-28. PMID: 26897901; PMCID: PMC4778976.
5. Savitha, K., Manoharan, P. S.; Balaji, J.; Ezhumalai, G. I.; Pradeep Raja, B. T.; Roy, Sanchayita. Effect of silver diamine fluoride, potassium nitrate, and glutaraldehyde in reducing the post vital tooth preparation hypersensitivity: A randomized controlled trial. The Journal of Indian Prosthodontic Society 22(2):p 143-151, Apr–Jun 2022. | DOI: 10.4103/jips.jips\_254\_21.

Glu/Sense, D/Sense Crystal, SilverSense SDF and Benda Micro are all trademarks of Centrix, Inc.  
 © 2026 Centrix, Inc. All rights reserved. MK0212 REV A

**centrix**<sup>®</sup>  
 MAKING DENTISTRY EASIER<sup>®</sup>

MAKING DENTISTRY EASIER<sup>®</sup> | [CENTRIXDENTAL.COM](https://CENTRIXDENTAL.COM)