

# Dr. Cristian Enachescu

## Old Composite Filling with Decay



**Exposé**<sup>®</sup>  
Disposable Caries Indicator



### AREAS OF EXPERTISE

- Esthetic Dentistry
- Oral Implantology
- Prosthodontics

### EDUCATION

- 2005 – 2006  
University of Medicine and Pharmacy Carol Davila Bucuresti
- Master's Degree Oral Implantology

- 1999 – 2005  
University of Medicine and Pharmacy Carol Davila Bucuresti
- Bachelor's Degree, Dentistry

### WORK EXPERIENCE

- 2005 - Present  
General Dentist Charmdental Dr. Enachescu

### PROFESSIONAL MEMBERSHIP

- European Association of Osseointegration
- Society of Esthetic Dentistry in Romania

## Overview

Preoperative condition

Patient presents with an old composite restoration with decay (Fig 1). Remove composite and all visibly infected dentin (Fig 2). Wet then use Exposé to check for any remaining unseen caries. (Fig 3). Rinse with water. Any infected dentin will be clearly marked by the Exposé dye (Fig 4). Remove remaining infected dentin. Exposé makes this easy to see (Fig 5). #30 restored with composite (Fig 6). Final restoration (Fig 7).



Fig. 1



Fig. 2

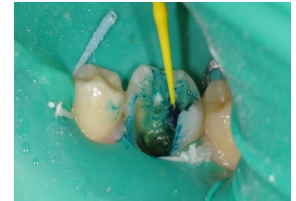


Fig. 3



Fig. 4



Fig. 5



Fig. 6



Fig. 7

## Which features of the Exposé are most important to you?

Exposé Caries Indicator eliminates the need for messy bottles or syringes that can leave stains on soft tissue and clothing. It is a unit dose Benda<sup>®</sup> Micro brush with the dye dried on the brush; when it is wetted with water or saliva it enables me to precisely place it on a suspected lesion. Cleanup is much easier – no tips to replace, no sheaths to change from the syringe; no extra brushes are needed. Exposé can be used several times on the same lesion to make sure all infected dentin is removed.

“

Exposé is easy,  
fast and at your  
fingertips.

– Dr. **Cristian Enachescu**

## BLUE Indicators



Fine (1.5 mm point)



Extra-Fine (1.0 mm point)



How does Exposé help you in your restorative procedures?

I keep one on the tray for most procedures so it is always at hand, ready to use. It makes the procedure and the cleaning of the infected dentin faster.

Exposé comes in several product variations. Which product offering do you prefer?

I am using the fine blue indicator with yellow handle. I prefer the bigger brush size since it is able to cover a bigger area faster. The blue dye cannot be confused with blood or pulp in cases where the lesion is close to the pulp chamber. The choice of brush sizes provides more flexibility, whatever the clinical situation.

What tips or tricks would you offer to another dentist using the product for the first time?

It is important to leave the tooth structure a little bit moist so that you do not waste a lot of the dye. I also recommend using the brush several times while checking the tooth to make sure all infected material is removed – it is just so easy to do this.

What did you use before Exposé?

I used bottles with caries indicator liquids but then I also needed extra brushes and mixing wells – and they were messy. I had used syringes but changing tips and sheaths every time was time-consuming and expensive.

How does Exposé compare to your previous products?

With Exposé the procedure is faster and requires less accessories.

Explain how Exposé enables more minimally invasive procedures.

Sometimes there is dentin that has a different color (for many reasons) but it may not be infected. If you do not use a caries indicator, you will remove good, healthy dentin and end up with a larger prep than necessary and possibly damage the pulp. If you use Exposé, you can be sure that healthy dentin will not be removed. Procedures are easy: remove obvious caries; leave the tooth wet or wet the Exposé; rub on a suspected lesion; and rinse. Colored or stained material is infected and is clearly identified for removal. With Exposé it is easy to repeat until you are sure.

If you were presenting Exposé to another dentists, what would resonate most?

There is no need for mixing wells, bottles, syringes, extra tips, extra brushes. Exposé provides everything in one brush, right at your fingertips.

If you were to promote Exposé, what would be your main message?

Faster and cleaner procedure.